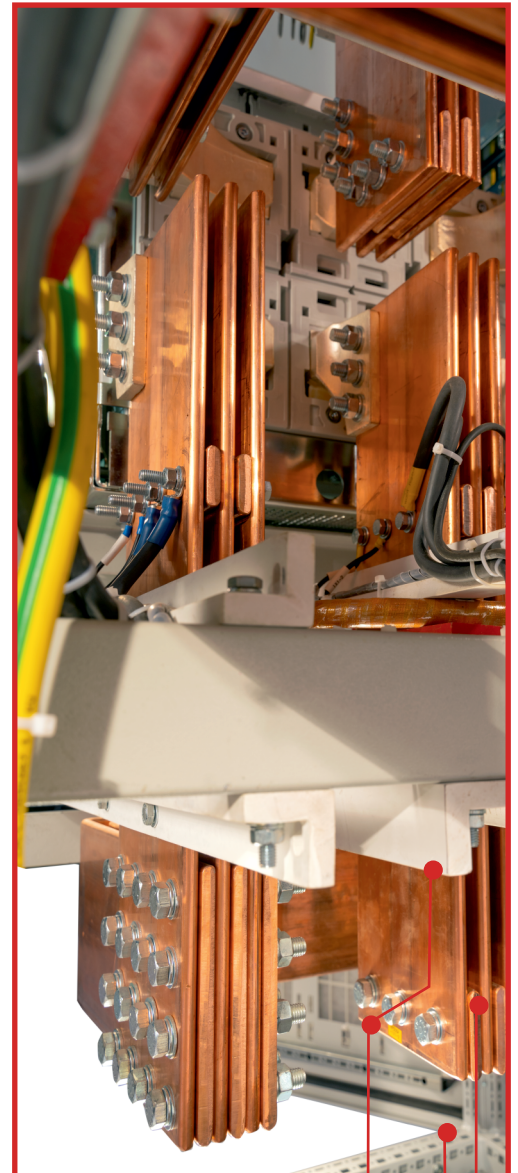
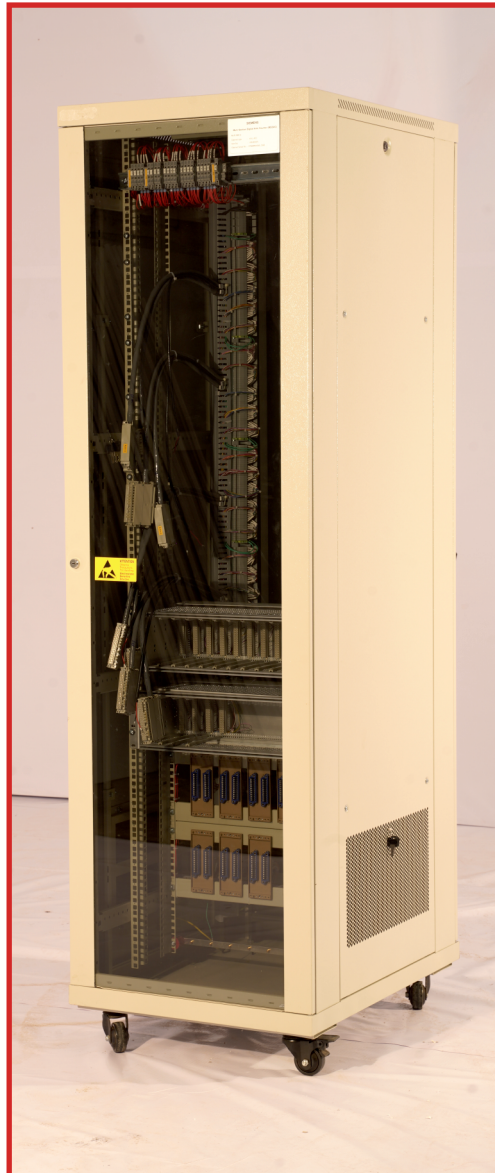
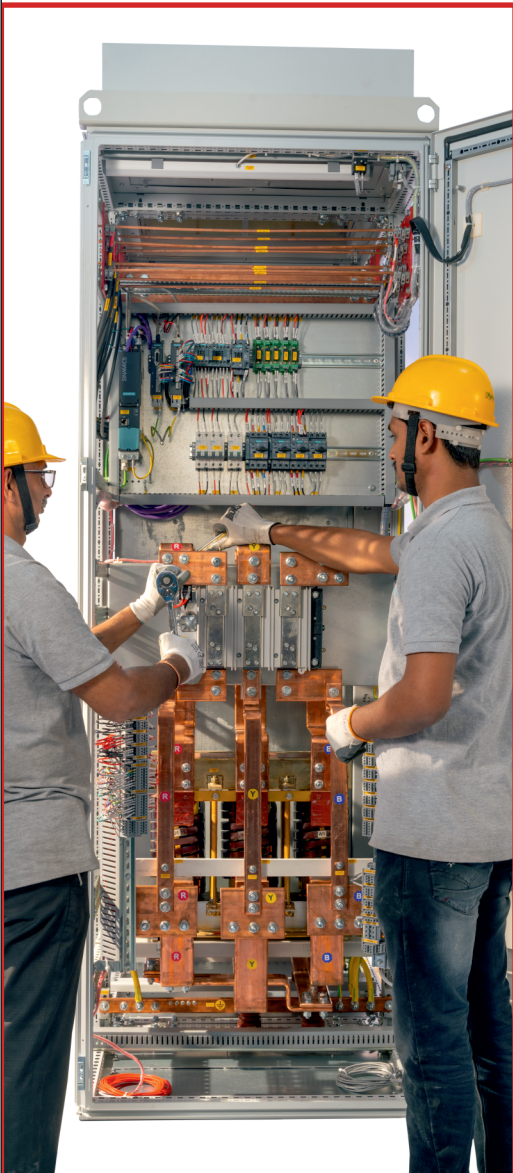




**SALUNKE  
AUTOMATION**  
PRIVATE LIMITED  
— QUALITY IS THE KEY —



**A ONE-STOP SOLUTION FOR ELECTRICAL  
DRIVES AND AUTOMATION NEEDS**



## ABOUT US

Founded in 2006, Salunke Automation Pvt. Ltd., a sister company of Salunke Industries, has established itself as a trusted provider of comprehensive electrical drives and automation solutions. With a strong foundation in quality and innovation, we have become a reliable partner in the industry. As a key vendor for Siemens Ltd., we are committed to delivering excellence and exceptional customer support to meet evolving industrial demands.

## OUR PRODUCTS

### AC/DC DRIVE PANELS | VFD PANELS

Efficient motor speed control with energy savings, durable design and built-in safety features, suitable for diverse industrial applications.

### MCC PANELS | PCC PANELS

Ensure reliable motor control and power distribution with modular design, fault protection, and compliance with safety standards.

## WHY CHOOSE US?

### Unmatched Expertise

Backed by years of industry experience, we deliver innovative and reliable electrical and automation solutions

### Comprehensive Solutions

From design to commissioning and maintenance, we provide end-to-end services tailored to your needs.

### PLC CONTROL RIO PANELS

Precise automation, fast communication & customizable designs, ensuring efficient process control and easy troubleshooting.

### APFC PANELS | AMF PANELS

Optimize power usage, manage generator control & provide real-time monitoring with built-in protection for reliable, low maintenance performance.

### Commitment to Quality

Our products are crafted with premium materials and advanced technology, ensuring durability and superior performance.

### Exceptional Customer Support

We prioritize client satisfaction with personalized solutions and reliable after-sales service.

## INDUSTRIES WE SERVE

We provide innovative solutions across a wide range of industries, ensuring optimal performance and efficiency.



**AUTOMOTIVE**

**RAILWAYS**

**FOOD & BEVERAGES**

**POWER & ENERGY**

**OIL & GAS**

**CEMENT**

**CHEMICAL**

**TEXTILES**

**PHARMACEUTICALS**

**CHEMICALS &  
PROCESS INDUSTRIES**

**STEEL & HEAVY  
MANUFACTURING**

**INFRASTRUCTURE &  
BUILDING AUTOMATION**



**WHAT IS OUR CUSTOMER  
SATISFACTION RATE?**



**WE ARE 100% CERTIFIED FOR QUALITY**

## MORE ABOUT OUR SERVICES

We provide a comprehensive range of services to improve system efficiency, ensure smooth operation, and extend the lifespan of your Equipment, including :

**RETROFIT PROJECTS**

**COMMISSIONING**

**CONSULTANCY**

**ANNUAL MAINTENANCE  
CONTRACTS**

**CONTROL PANEL  
MAINTENANCE**



## CONTACT US

### HEAD OFFICE

Shop No : 04, Jash apartment, Wadala Pathardi Road, Nashik - 422009

#### WORK - 1

L-24, MIDC, Ambad,  
Nashik - 422010,  
Maharashtra

#### WORK - 2

IT-29/2, MIDC, Ambad,  
Nashik - 422010,  
Maharashtra

#### WORK - 3

Block No. - 227/1,  
Shewali (DA) Road, Tal- Sakri,  
Dist - Dhule - 424304, Maharashtra

#### CALL US

0253 - 2971473 | +91 8956268978

#### EMAIL US

[sales@salunkeautomation.com](mailto:sales@salunkeautomation.com)

#### WEBSITE

[www.salunkeautomation.com](http://www.salunkeautomation.com)

Scan the QR code to  
explore our website and  
know more about us



## OUR CLIENTS

**SIEMENS**

